



AUTOMASTER

THE AUTO EQUIPMENT SPECIALISTS

Powerrex SL-3600A

4500kg 4 Post Wheel Alignment Hoist



**POWERREX
KOREA®**



Powerrex SL-3600A

4500kg 4 Post Wheel Alignment Hoist



OUR VICE-GRIP GUARANTEE

If you're not happy, we replace or refund in full.



Suitable for 3D or CCD aligners, small or large vehicles.

SPECIFICATIONS	
Capacity	4500KG
Max lift height	1800mm
Min Height	235mm
Lifting Time (approx)	45-55 Sec
Width between columns	2734mm
Runway length	4600mm
Runway width	575mm
Total width not incl motor	3370mm
Ramp length	1200mm
Total length incl ramps	6075mm
Weight	1880kg
Power supply	230V 1PH or 380V 3Ph

FEATURES

- SL-3600A 4500kg Powerrex Korea lift is 100% Made in Korea.
- Multiple position turn table recesses
- Multi-directional lockable rear slip plates
- 2 x rolling jacking beams powered by the main hydraulic pump of the lift there is no need to run pneumatic air lines to the jacking beams.
- Operation is a simple single button to go up and lock button to rest the lift onto the locks. Lower button raises the lift off the locks and lowers the lift.
- Low profile of 235mm from the ground and fitted with 1200mm long drive on ramps to accommodate low vehicles.
- Double lock safety system is automatically activated as the lift is raised and includes a cable brake emergency locking system should there be failure
- Electrically operated unlocking system is automatically operated by simply pushing the down button on the control panel or remote control. No pneumatic supply is required.
- Adjustable locking ladders in each post enable simple leveling of the lift and ensure all 4 corners of the lift are locked.
- 575mm Wide and 4600mm long runways to accommodate small and large vehicles
- 4500kg max lifting capacity
- "Suitable to lift low, large & small cars, vans, 4x4 & utes etc.."
- Top quality motor & pump unit
- Aus/NZ safety certified
- Full 2 year warranty



Includes 2 x jacking beams operated by switches mounted on each side of the jacking beams or from the remote control



6 Button remote control



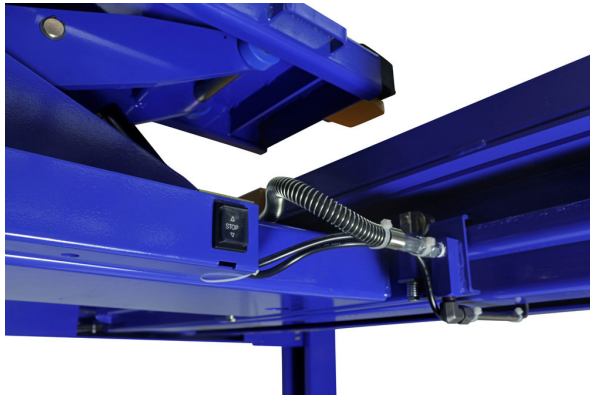
3 button control panel

Powerrex SL-3600A

4500kg 4 Post Wheel Alignment Hoist

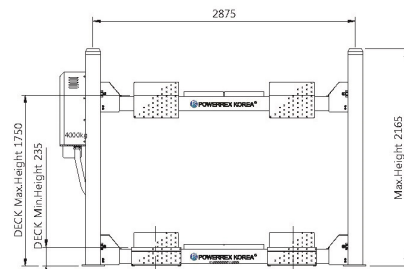
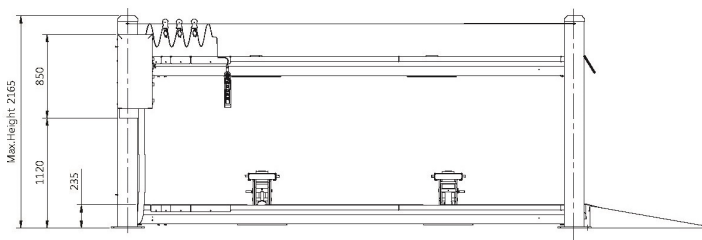
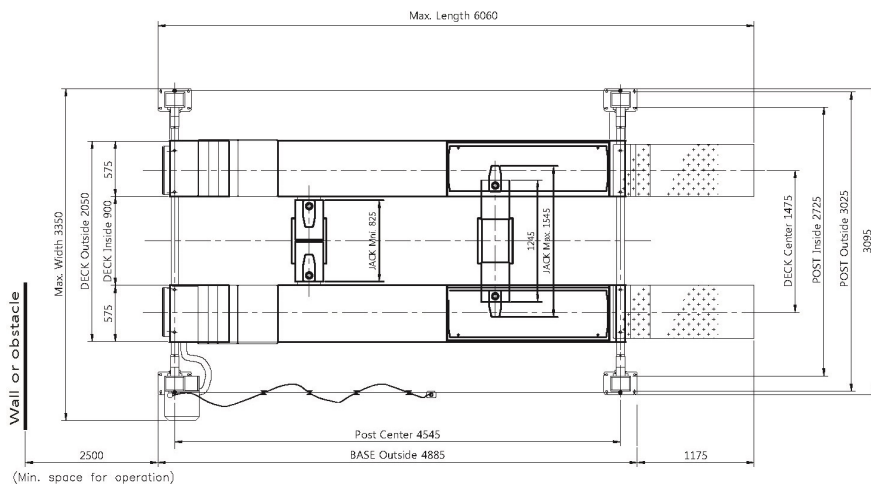


OUR VICE-GRIP GUARANTEE
If you're not happy, we replace or refund in full.



NO	DATE	REVISION & DESCRIPTION	SIGNATURE	
			REVIEWED	CHECKED

MODEL NO.	SL-3600A (JACK TYPE)
MAX.CAPACITY	MAIN 4,500 Kg
	JACK 2,000 Kg
MAX.LIFTING HEIGHT	MAIN 1,750 mm
	JACK 540 mm
LOWEST HEIGHT	MAIN 235 mm
	JACK 205 mm
SIZE (mm)	3,350W x 2,165H x 6,060L
LIFTING TIME	MAIN 50 sec.(Approx)
	JACK 35 ~ 45 sec.(Approx)
LOWERING TIME	MAIN 60 ~ 80 sec.(Approx)
	JACK 65 ~ 80 sec.(Approx)
POWER & MOTOR	Single 2.5HPx3Px220Vx50/60Hz 3phase 2HPx5Px380V/415Vx50/60Hz
OPERATION METHOD	Control panel / Wired remote control type



NO.	DESCRIPTION	WEIGHT OR SIZE	MATERIAL	QTY	REMARK
ANOTHER	APPROVED BY:	Jaehyeong Lee	TITLE:		
	CHECKED BY:	JH. L.	SL-3600A 4-POST JACK TYPE LIFT		
	DESIGNED BY:	KK. L.			
	DATE:	2015.03.24.			
	SCALE:	1:N			
	DWG NO.	PL-804-02	POWERREX KOREA®		