

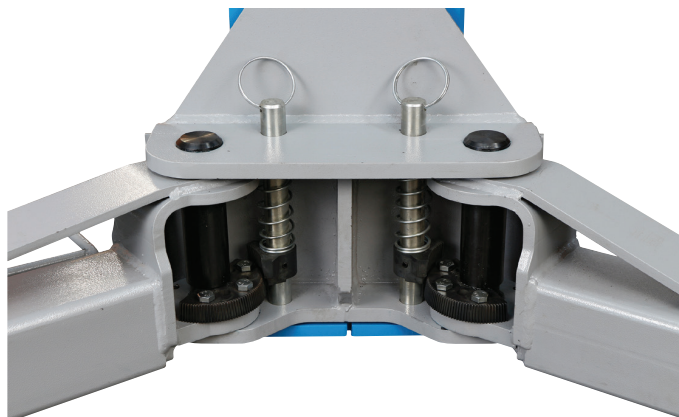
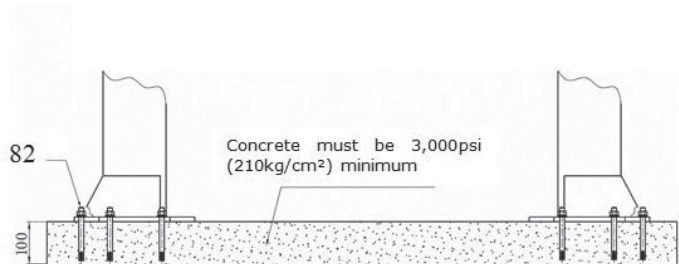
## AUTOMASTER AM-6246R

### Two Post Hoist 4.5T

- Symmetrical or asymmetrical installation
- 3 stage front 2 stage rear arms
- Full length hydraulic cylinders with Italian seals
- Top quality motor & pump unit
- Remote control for up and lock
- Suitable for 4 x 4's, vans, low cars, American cars, utes etc.
- Dual cylinder lifting system with balance cables
- Tool trays attached to each arm
- Safety shutoff bar across top of hoist
- Ultra low arm design with 80mm 4x4 extensions supplied
- Rubber door protection pads
- Low service costs
- High motor position
- Can be installed in narrow or wide configuration and with the motor high up on the front of the column, it is completely out of the way.
- There is also a high and a low setting for the top cross bar depending on available roof height.
- Minimum of 100mm of concrete for installation

SPECIFICATIONS	
Capacity	4500kg
Max height	Std -1794-1950mm
Min height	88mm
Lifting time (approx)	Single phase 52sec Three phase 42sec
Weight	730kg
Power supply	220V or 380V
Warranty	2 Year

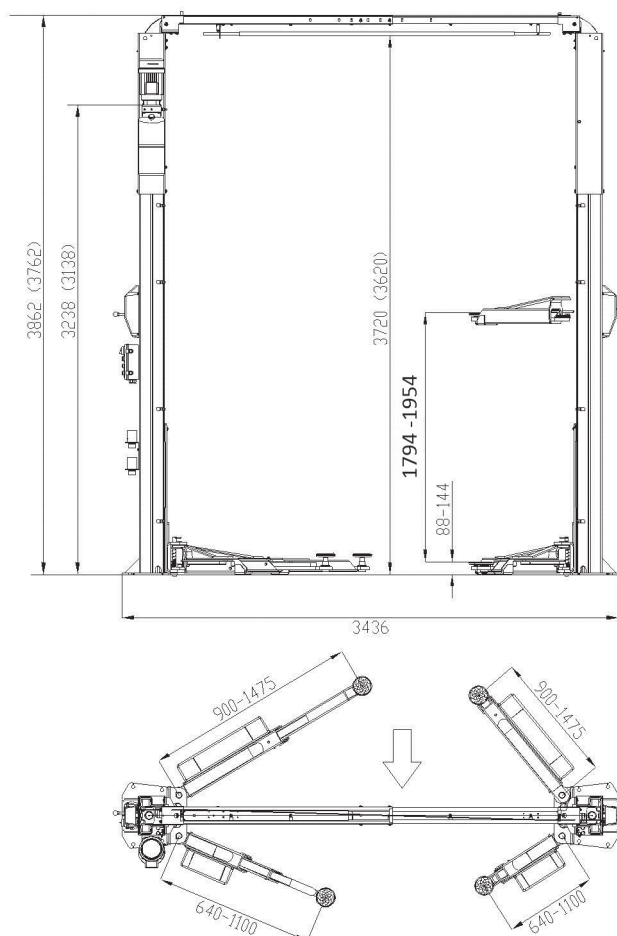




**AUTOMATIC LOCKING PINS**



**Symmetrical installation**



**Asymmetrical installation**

